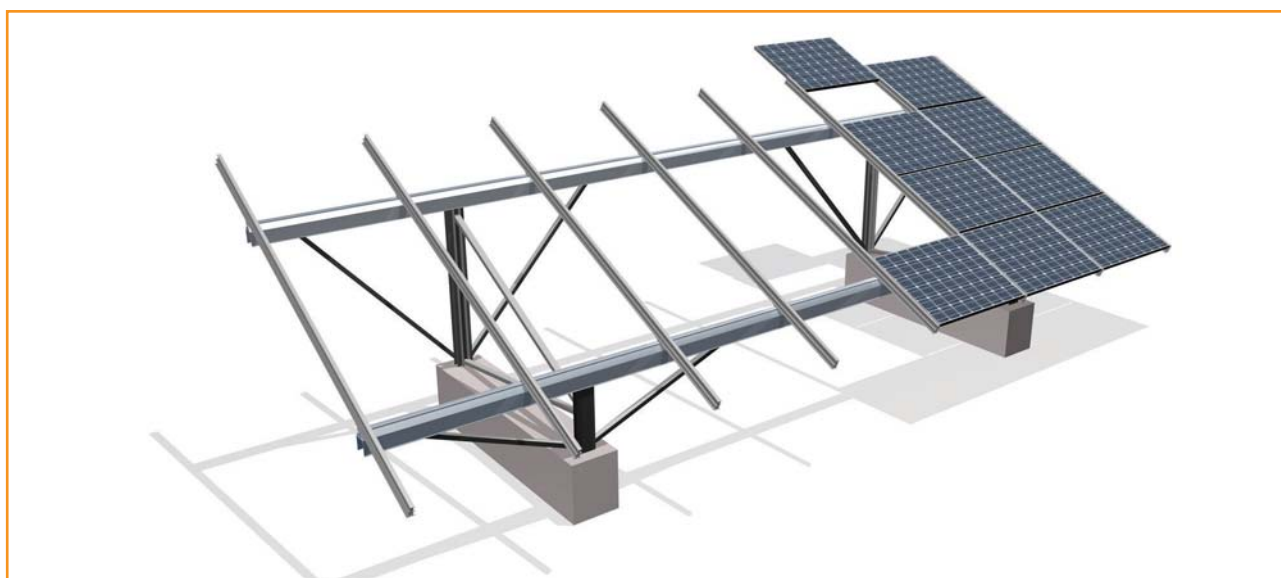




The Conergy SolarGiant II was specially designed for use in large photovoltaic systems in open areas. The modules can be arranged in any number of rows and columns on the

module table in an area of up to 50 m². The Conergy SolarGiant II offers high savings potentials on investment in the system due to its aluminum finishing.



Ground mount



Framed Modules



Orientation landscape



Orientation portrait

 $\leq 1,4 \text{ kN/m}^2$

Snow load



Material warranty

 $\leq 28 \text{ m/s}$

Wind load

Ecological considerations

The module arrays of the Conergy SolarGiant II were designed so that the surrounding ground has access to sufficient light and moisture. A variety of flora and fauna can develop in this area. So the area on which the large PV system shall be built on cannot only be used for producing solar power, but also acts as a retreat for local plants and animals.

Optimum height

As the distance from the lower edge of the module to the ground is around 1 m¹, the ground might be extensively maintained and used, for example, by sheep or goats. This height above the ground also protects the modules against damage and contamination by animals. In addition, the height offers sufficient protection against heavy snowfalls.

Fast assembly

All components are pre-assembled according to the module type selected. The modules need only be inserted into the profile rails from above. This guarantees fast assembly.

High reliability

On request², the Conergy SolarGiant II can be provided with an auditable assessment of the statics and thus fulfills the requirements of a building permit application. The loading capacity of the system conforms to DIN 1055.

Maximum service life

All components are made from aluminum and stainless steel. The high corrosion resistance guarantees a long service life and makes the components completely recyclable.

Durability guaranteed

Conergy provides a guarantee of 10 years on the durability of all materials used.

¹ Variants available on request

² At extra cost (please advise when ordering).



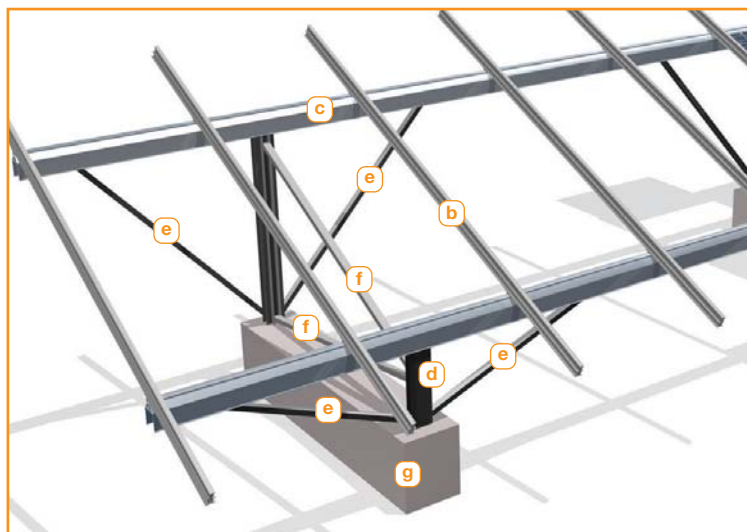
CONERGY

Photovoltaic mounting systems | Technical data

Conergy SolarGiant II

Overview

- a** Framed PV module
- b** Module profile rail¹
- c** Crossbar
- d** Support
- e** Diagonal struts
- f** Reinforcement
- g** Foundation or heavyweight panels²



Installation site	Ground
Snow load	Up to snow load 1.4 kN/m ² , max. 500 m above sea level
PV modules	Framed
Module arrangement (standard)	7 modules side by side, 4 modules on top of each other (28 modules per mounting system) ³
Module orientation	landscape or portrait
Tilt angle	15°–35°
Size of the module array	Max. 10.0 x 5.0 m (W x H)
Distance from lower edge of module to ground	1 m ⁴
Standards	Complies with DIN 1055 ⁵ , Eurocode 9, part 1.1
Frame sections	Extruded aluminum (ENAW 6060/6063)
Small parts	Stainless steel (V2A)
Color	Natural
Lightning protection	Optional, available at extra cost
Warranty	10 years durability on materials

¹ Number of rafters dependent on quantity and size of modules

² Not included in delivery; we offer individual load calculations (at extra cost).

³ Other arrangements are possible depending on the module dimensions and the maximum size of the mounting system.

⁴ Variants available on request

⁵ On request, an auditable assessment of the statics can be provided at extra cost (please advise when ordering).

Available from: